

MANAGEMENT'S DISCUSSION AND ANALYSIS

Introduction

This Management's Discussion and Analysis ("MD&A") supplements, but does not form part of, the unaudited condensed consolidated interim financial statements of Lupaka Gold Corp. ("Lupaka Gold") and the notes thereto for the periods ended June 30, 2013 and 2012 (collectively referred to hereafter as the "Unaudited Financial Statements").

In this MD&A, "Lupaka", the "Company", or the words "we", "us", or "our", collectively refer to Lupaka Gold and its 100%-owned subsidiaries, Andean American Gold Corp. ("Andean American", Canada), Minera Pacacorral S.A.C. ("MP", Peru), Invicta Mining Corp S.A.C. ("IMC", Peru), Andean Exploraciones S.A.C. (Peru) and Greenhydro S.A.C. (Peru).

This MD&A provides management's comments on Lupaka's operations for the periods ended June 30, 2013 and 2012, and the Company's financial condition as at June 30, 2013, compared with the preceding year-end.

The effective date of this MD&A is August 8, 2013.

For a complete understanding of the Company's business environment, risks and uncertainties and the effect of accounting estimates on its results of operations and financial condition, this MD&A should be read together with the Company's Unaudited Condensed Consolidated Interim Financial Statements and the 2012 Annual Information Form (the "AIF"), each of which can be found at www.sedar.com.

All currency amounts are expressed in Canadian Dollars unless otherwise indicated.

The Unaudited Condensed Consolidated Interim Financial Statements and this MD&A were reviewed and recommended by the Company's Audit Committee to the Board of Directors, and approved by the Board of Directors on August 8, 2013.

Forward-Looking Statements

Statements contained in this MD&A that are not historical facts are "forward-looking statements" or "forward-looking information" (collectively, "**Forward-Looking Information**") (within the meaning of applicable Canadian securities legislation) that involve risks and uncertainties. Forward-Looking Information includes, but is not limited to, statements relating to the amount of financings; and management's expectations regarding the ability to raise equity capital; expected use of proceeds; business objectives and strategies; the assets and liabilities of Andean American and its subsidiaries; the acquisition of interests in mineral properties; the timing of completion and success of community relations (including with respect to agreements with local communities), exploration activities, permitting and related programs on the Crucero Gold Project and the Invicta Gold Project; requirements for additional capital; the estimation of mineral resources; the effect of government policies and announcements and changes to applicable laws in Peru on the Company's operations; and the value of shares of Southern Legacy Minerals Inc. In certain cases, Forward-Looking Information can be identified by the use of words such as "plans", "expects" or "does not expect", "is expected", "budget", "scheduled", "estimates", "forecasts", "intends", "anticipates" or "does not anticipate", or "believes", or variations of such words and phrases or statements that certain actions, events or results "may", "could", "would", "might" or "will be taken", "occur" or "be achieved".

The Forward-Looking Information is based on certain assumptions that the Company believes are reasonable, including: with respect to any mineral resource estimates, the key assumptions and parameters on which such estimates are based; the assumption that any additional financing needed will be available on reasonable terms; the exchange rates of the U.S., Canadian and Peruvian currencies in 2013 and 2014 will be consistent with the Company's expectations; that the Company's current exploration and other objectives concerning the Crucero Gold Project, the Invicta Gold Project and the Company's shareholdings of Southern Legacy Minerals Inc. can be achieved; that the results of exploration and other activities will be consistent with management's expectations; that the demand for gold will be sustained; that general business and economic conditions will not change in a material adverse manner; that the Company and its subsidiaries will not experience any material accident, labour dispute or failure or shortage of equipment; that all necessary community and government approvals for the

planned exploration of the Crucero Gold Project and the Invicta Gold Project will be obtained in a timely manner and on acceptable terms; and that the Company's interests in Peru will not be adversely affected by political, social or economic instability in Peru or by changes in the government of Peru or its politics and tax policies. Other assumptions are discussed throughout this MD&A.

Forward-Looking Information involves known and unknown risks, uncertainties and other factors which may cause the actual results, performance or achievements of the Company to be materially different from any future results, performance or achievements expressed or implied by the Forward-Looking Information. Such risks and other factors include, among others: risks related to the completion of financings and the use of proceeds; that mineral resources are not as estimated; unexpected variations in mineral resources, grade or recovery rates; operations and contractual rights and obligations; actual results of the Company's exploration activities being different than those expected by management; changes in exploration programs based upon results of exploration; changes in estimated mineral resources; future prices of metals; currency and interest rate fluctuations; financial risk exposure of the Company such as credit and liquidity risk; availability of third party contractors; increased costs of labour, equipment or materials; increased costs as a result of changes in project parameters; availability of equipment; failure of equipment to operate as anticipated; accidents, effects of weather and other natural phenomena and other risks of the mineral exploration industry; political risks involving the Company's operations in a foreign jurisdiction; environmental risks; risks related to community relations and activities of stakeholders; and unanticipated delays in obtaining or failure to obtain community, governmental, judicial or regulatory approvals, or financing; as well as those factors referenced in the section entitled "Risk Factors" in this MD&A. Although the Company has attempted to identify important factors that could affect the Company and may cause actual actions, events or results to differ materially from those described in Forward-Looking Information, there may be other factors that cause actions, events or results not to be as anticipated, estimated or intended. There can be no assurance that Forward-Looking Information will prove to be accurate, as actual results and future events could differ materially from those anticipated in such statements. Accordingly, readers should not place undue reliance on Forward-Looking Information.

The Forward-Looking Information in this MD&A is made only as of the date hereof. Except as required under applicable securities legislation, the Company does not intend, and does not assume any obligation to update the Forward-Looking Information contained in this MD&A.

Cautionary Note to US Investors

Information concerning mineral properties in this MD&A has been prepared in accordance with Canadian disclosure standards under applicable Canadian securities laws, which are not comparable in all respects to United States disclosure standards. The terms "Mineral Resource", "Measured Mineral Resource", "Indicated Mineral Resource" and "Inferred Mineral Resource" (and similar expressions) used in this MD&A are Canadian mining terms as defined in accordance with National Instrument 43-101 under guidelines set out in the standards set by the Canadian Institute of Mining, Metallurgy and Petroleum.

While the terms "Mineral Resource", "Measured Mineral Resource", "Indicated Mineral Resource" and "Inferred Mineral Resource" are recognized and required by Canadian regulations, they are not defined terms under the standards of the U.S. Securities and Exchange Commission ("SEC"). As such, certain information contained or incorporated by reference in this MD&A concerning descriptions of mineralization and resources under Canadian standards is not comparable to similar information made public by U.S. companies subject to the reporting and disclosure requirements of the SEC. An "Inferred Mineral Resource" has a great amount of uncertainty as to its existence and as to its economic and legal feasibility. It cannot be assumed that all or any part of an "Inferred Mineral Resource" will ever be upgraded to a higher category. Under Canadian rules, estimates of Inferred Mineral Resources may not form the basis of feasibility or other economic studies. Investors are cautioned not to assume that all or any part of Measured, Indicated or Inferred Mineral Resources will ever be converted into Mineral Reserves. Investors are also cautioned not to assume that all or any part of an "Inferred Mineral Resource" exists, or is economically or legally mineable.

Qualified Person

William Burstow, an independent consulting geologist, is the Company's Qualified Person as defined by National Instrument 43-101 of the Canadian Securities Administrators ("NI 43-101") and is responsible for the preparation and/or verification of the technical disclosure in this document, unless otherwise noted.

Overall Performance

The Company is a mineral exploration company involved in the acquisition and assessment of mineral properties in Peru. Lupaka Gold's common shares trade in Canada on the Toronto Stock Exchange ("TSX") and in Peru on the Bolsa de Valores de Lima ("BVL", otherwise known as the Lima Stock Exchange) under the symbol LPK, and in Germany on the Frankfurt Exchange ("FRA") under the symbol LQP. Lupaka Gold's share purchase warrants trade on the TSX under the symbol LPK.WT.

The Company's activities and events of note for the last twelve months are as follows:

- The Company announced on July 23, 2013 that it had received: a 4-year renewal of the Crucero Gold Project community agreement; additional access agreements from local families; and the petitions for its Pacacorral 2 and Pacacorral 3 mineral claims were granted as fully registered mining concessions by the Ministry of Energy and Mines ("MEM");
- On July 2, 2013, the Company announced the results of its most recent campaign of metallurgical recovery testing on the mineralization from the A-1 Zone at its Crucero Gold Project. Summary results were from tests performed on two composite samples reflecting the two distinct mineralization types within the Crucero mineralization envelope. The wide range of recovery results reflect the suite of tests performed and the treatment options analyzed. Depending on types of minerals, their concentration and grind size, leach extraction of 60-75% gold was achieved. Diagnostic leach tests at ultrafine grinds showed leach extraction of 89% and 94% for the two composites (see "*Mineral Projects*" below for additional details);
- In early June 2013, the Company received a structural geological context and interpretation report developed from field work and aerial photo interpretation conducted by SRK Consulting (Toronto, Canada). This report was commissioned in order to gain a better understanding of the structural geology and mineralization controls at the Company's Crucero Gold Project;
- At the Company's May 16, 2013 AGM, three new directors were elected to Lupaka Gold's Board of Directors: Hernan F. Barreto; Jaime A. Pinto; and Luquman A. Shaheen. Mr. Barreto and Mr. Pinto are Peru residents active in the Peru mining industry, while Mr. Shaheen is the President and CEO of Panoro Minerals Ltd., an active copper and copper-gold exploration company which operates in Peru;
- On February 27, 2013, the Company announced an updated NI 43-101 compliant Indicated and Inferred mineral resource estimate for the Crucero Gold Project. The updated resource estimate was prepared by Tetra Tech WEI Inc. ("Tetra Tech"), formerly Wardrop Engineering, of Vancouver, Canada, and reported an indicated resource of 31.4 million tonnes at 1.01 gold grams per tonne (g/t) capped grade for 1,017,999 gold ounces and an inferred resource of 37.2 million tonnes at 1.00 g/t capped grade for 1,190,526 gold ounces at the A-1 Zone. Both the inferred and indicated categories now have a gold grade of 1 g/t or higher as a result of the 2012 drill results. Compared to the March 2012 resource update, these results represent an 11% decrease in the indicated resource and an 84% increase in the inferred resource, for the A-1 Zone (see "*Mineral Projects*" below);
- On October 1, 2012, the Company announced the closing of the acquisition of Andean American ("AAG Merger"). As a result of this transaction, the Company acquired approximately \$13.5 million in cash, the Invicta Gold Project and a 17% ownership position in Southern Legacy Minerals Inc. (see "*Acquisition of Andean American*" below);
- Lupaka Gold's common shares were listed for trading on the BVL in February 2013, under the symbol LPK; and
- The Company announced on October 26, 2012, that the petition for its Pacacorral 4 mineral claim was granted as a fully registered mining concession by the MEM.

Outlook

The Company's primary priorities are to continue its mineral exploration and development activities on the Crucero Gold Project, to explore on and review potential options regarding the Invicta Gold Project, and to maximize the potential return on its investment in Southern Legacy Minerals.

The Company will also remain vigilant towards the potential acquisition of interests in other mineral resource properties in Peru that are assessed by management to be of merit.

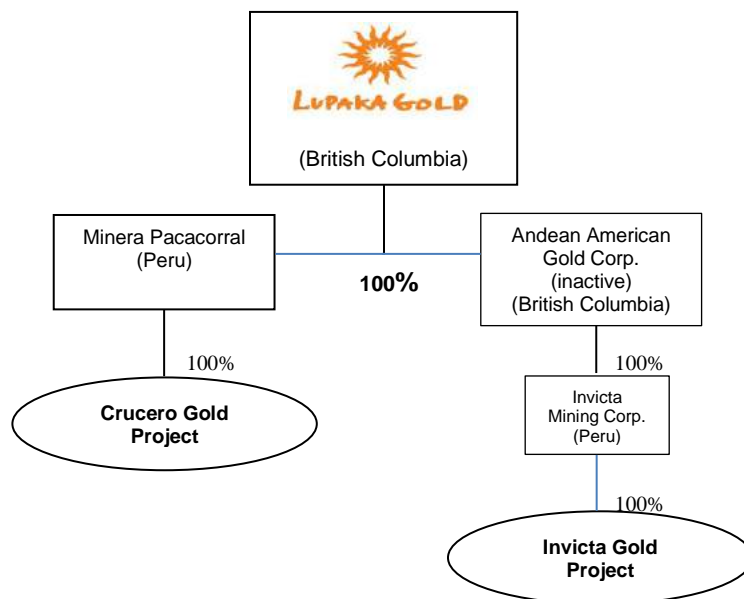
Corporate Structure

Lupaka Gold was incorporated under the *Company Act* (British Columbia) (predecessor to the British Columbia *Business Corporations Act*) on November 3, 2000 under the name "Kcrok Enterprises Ltd." and transitioned to the *Business Corporations Act* (British Columbia) on November 2, 2005. On May 4, 2010, the Company changed its name to "Lupaka Gold Corp."

Lupaka Gold's head office and records office are located at Suite 428 - 800 West Pender Street, Vancouver, British Columbia, V6C 2V6, and its registered office is located at Suite 700 - 595 Howe Street, Vancouver, British Columbia, V6C 2T5.

Lupaka Gold owns 100% of the issued and outstanding shares of MP, a company incorporated on July 10, 2008 under the laws of the Republic of Peru, and 100% of the shares of Andean American as a result of the acquisition of Andean American which closed on October 1, 2012.

The following chart depicts the Company's corporate structure together with the jurisdiction of incorporation of the Company and its wholly-owned subsidiaries as of August 8, 2013. The entities below are active unless otherwise noted.



Other subsidiaries, all of which are 100%-owned, inactive and located in Peru, are:

- Andean Exploraciones S.A.C. ("AES")
- Greenhydro S.A.C. ("Greenhydro")

As at August 8, 2013, Lupaka Gold had a market capitalization of approximately \$18 million.

The Company's executive head office is located in Vancouver, Canada, while its Peru operations are run from MP's Lima office. MP also has a community relations office located in the town of Crucero, as well as exploration camps at the Crucero Gold Project and the Invicta Gold Project. With the exception of short-term operational requirements for its Peru operations, funds are maintained and controlled in Vancouver, in both Canadian and US

Dollars. In addition to its staff located in Vancouver and Peru, the Company engages consultants when necessary, to provide geological, metallurgical and other corporate consulting services.

As of June 30, 2012 and through to June 30, 2013, the number of employees of the Company was as follows:

	June 30, 2012	September 30, 2012	December 31, 2012	March 31, 2013	June 30, 2013
<i>Vancouver, Canada</i>	8	8	8	8	7
<i>Peru - MP</i>					
Administration	7	9	8	9	7
Exploration & Technical	39	43	43	48	33
<i>Peru - Invicta</i>					
Exploration & Technical	n/a	n/a	19	14	7
Total	54	60	78	79	54

The number of exploration-related employees varies through the year as a result of the cyclical nature of the Crucero Gold Project exploration season, which generally runs from May to December each year and which is highly dependent upon seasonal weather conditions at the project site. With the integration of the Invicta Gold Project into the Company's operations, the number of Invicta administrative and technical staff have steadily decreased as the Company evaluates its project options.

Business of the Company

The Company is a gold mineral exploration company. Its principal activities consist of evaluating, acquiring, exploring and developing gold mining properties in Peru. In July 2010, the Company acquired 60% of the shares of MP, a Peruvian company that holds the following interests in the nine claims that comprise the Crucero Gold Project: a 100% interest in six mining concessions, and a 30 year assignment (commencing September 2008) of a 100% interest in three additional mining concessions, subject to private royalty obligations. In January 2012, the Company made its final payment obligation related to its initial 60% ownership of MP and acquired the remaining 40% minority interest in MP, with the result that MP became a 100%-owned subsidiary of Lupaka Gold.

Mineral exploration and development of mining properties are expected to constitute the principal business of the Company for the coming years. In the course of realizing its objectives, it is expected the Company will enter into various agreements specific to the mining industry, such as purchase or option agreements to purchase mining claims and enter into joint venture agreements.

Please see the Company's AIF for the history of the Company, including: financings of Lupaka Gold, the acquisition of the Crucero Gold Project, Agreements with K-Rok (a related party and >10% shareholder of Lupaka Gold, the MP Purchase Agreement, the Buyout of the MP Vendors), and the acquisition of Andean American.

Mineral Projects

CRUCERO GOLD PROJECT

The Crucero Gold Project is located in Carabaya Province, within the Puno Region of south-eastern Peru and is comprised of nine mineral concessions covering an aggregate area of approximately 5,500 hectares.

Exploration to date

The Crucero Gold Project hosts eleven identified mineral anomalies, one of which (the "A-1 Zone") has a National Instrument 43-101 ("NI 43-101") compliant resource as described below, which was recently updated (effective as at February 27, 2013).

The updated A-1 Zone resource estimate was prepared by Gregory Mosher of Tetra Tech WEI Inc. ("Tetra Tech"), formerly Wardrop Engineering, of Vancouver, Canada, and reported an indicated resource of 31.4 million tonnes at 1.01 gold grams per tonne (g/t) capped grade for 1,017,999 gold ounces and an inferred resource of 37.2 million tonnes at 1.00 g/t capped grade for 1,190,526 gold ounces at the A-1 Zone. Mr. Mosher is a Qualified Person for this resource estimate, for the purposes of NI 43-101. See also the Company's AIF dated March 27, 2013.

The following table summarizes the Company's Crucero Gold Project resources, estimated at a 0.4 g/t threshold (cut-off), effective as at February 27, 2013:

Resource Category	Tonnes	Au G/T Uncapped	Au G/T* Capped	Au OZ (Troy) Uncapped	Au OZ* (Troy) Capped
Indicated	31,403,987	1.12	1.01	1,127,533	1,017,999
Inferred	37,170,436	1.15	1.00	1,370,729	1,190,526

* -- Gold grades capped at 17 g/t 1 Troy Ounce = 31.10348 grams

2010 Drill Program

During the early part of 2010, MP drilled six holes, totalling 1,255 metres. The drilling of these holes was financed and supervised by the Company as part of its due diligence assessment of the Crucero Gold Project. Commencing in late 2010 and extending into early 2011, the Company drilled 12 additional core holes in the A-1 Zone, totalling 3,230 metres, to assess portions of the zone not tested by previous drilling and to acquire sufficient assay data to permit the upgrading of a portion of the previously-classified inferred resource to the indicated category (See www.sedar.com "Amended 2011 Technical Report"). In 2010, the Company spent approximately \$1 million on exploration and related technical and community relations costs for the Crucero Gold Project.

2011 Drill Program

The Company completed a total of 23 core drill holes for over 7,300 metres from May through December of 2011. The 2011 drill program was mainly focused on resource expansion at the A-1 Zone. Final assay results showed that the Company had not yet defined the northern limit of the A-1 Zone, and that the A-1 Zone mineralized envelope remained open and continued to the north. In 2011, the Company spent approximately \$3 million on exploration and related technical and community relations costs for the Crucero Gold Project.

2012 Drill and Technical Programs

The Company stopped drilling for the 2012 season as planned in December 2012, completing a total of 20 core drill holes for over 8,200 metres from May through December of 2012. The 2012 drill program was mainly focused on resource expansion at the A-1 Zone. Final assay results showed that the Company had not yet defined the northern limit of the A-1 Zone, and that the A-1 Zone mineralized envelope remained open and continued to the north.

Various geological programs also took place in 2012, covering mapping, soil sampling, geophysics and structural geology, towards improving the Company's knowledge of the Crucero Gold Project's geological structures. In 2012, the Company spent approximately \$5.5 million on exploration and related technical and community relations costs for the Crucero Gold Project.

Please see the Company's AIF, re: "**Crucero Gold Project**" for an outline of the A-1 Zone mineralized envelope projected to surface and with the locations of holes drilled to date, and a schematic of the relative locations of the eleven anomalous zones identified as being of significant interest.

Metallurgical studies

An updating of the Crucero Project's metallurgical testing began in 2012, with the results being announced on July 2, 2013, as follows:

Summary results were from tests performed on two composite samples reflecting the two distinct mineralization types within the Crucero mineralization envelope. The wide range of recovery results reflects the suite of tests performed and the treatment options analyzed. Depending on types of minerals, their concentration and grind size, leach extraction of 60-75% gold was achieved. Diagnostic leach tests at ultrafine grinds showed leach extraction of 89% and 94% for the two composites. The results have not been optimized and were performed with the purpose of assisting the Company to focus its exploration efforts through improved understanding of mineral associations and mineralogy, as it explores the remaining 10 identified (to date) exploration anomalies at Crucero. Working with Ausenco, the Company designed the test parameters for the most recent campaign to broadly evaluate the different mineralization types within the Crucero resource envelope.

The metallurgical test work programme evaluating the characteristics of Crucero Gold Project's A-1 Zone was conducted by SGS Lima, Peru and managed by Ausenco. The focus of the test programme was to investigate the two major mineralization gold association types represented by two separate composites: a Northern, mainly pyrrhotite, composite; and a Southern, mainly arsenopyrite, composite.

The Ausenco work evaluated several different processing options including whole-ore leaching, pre-aeration, grind size sensitivity cyanide concentration sensitivity, flotation, flotation concentrate leaching at various cyanide concentrations and regrind sizes, flotation tailing leaching at various cyanide concentrations, gravity concentration which included flotation of gravity tails and leaching of gravity concentrate and gravity tails. Comminution testing included Bond Ball Mill Work Index and SAG Mill Comminution tests. As no variability testing was conducted, the results presented herein are considered preliminary and are to be further evaluated when future variability testing is conducted.

The comminution characteristics for the Crucero Gold Project's A-1 Zone indicate that the ore is of medium hardness and has a high competency.

Leach times of 24 hours at a grind size of 80% passing 53 microns provided extractions of 60-65% for the Southern Composite having a 1.57 g/t gold head grade and 70-75% for the Northern Composite having a gold head grade of 1.24 g/t. Ultrafine grinding tests to 80% passing 10 microns on whole-of-ore samples increased extractions to 89% and 94% for the Southern and Northern composites respectively. As stated above, these extractions are considered preliminary as no variability tests have been carried out, and further gold association work is required prior to providing indications of extractions achievable over the whole deposit. Gold is considered to be the only mineral of economic interest.

The test work shows that the A-1 Zone gold extraction is independent of sodium cyanide concentration in the range 500 to 1500 mg/L. Opportunity remains to further reduce the cyanide dosing and concentration regime and thereby reduce operating costs. Pre-aeration with air was found to provide sodium cyanide consumption reduction and further work in this area is warranted.

Conclusions and Recommendations from the test work

The test work completed to date has suggested metallurgical performance is likely associated with arsenic, pyrrhotite and antimonial minerals, and is a function of grind size to achieve mineral liberation. As the deportment and location of these minerals is not defined, there is a need to understand this aspect and also the associated metallurgical behaviour by variability testing.

Additional variability test work is required to define comminution and metallurgical parameters with ore types and mineralisation in the resource in addition to providing engineering data such as settling characteristics, viscosity, materials handling and rheology. Use of oxygen for pre aeration, review of lead nitrate addition, application of reduced cyanide concentration and gold deportment evaluations all provide opportunity to improve extraction efficiency and project economics.

Management is satisfied that the testing accomplished its objective and provided sufficient direction to proceed with additional exploration at Crucero, in that the gold bearing mineralization responds favourably to whole ore leaching, gravity, magnetic and flotation separation, and cyanidation final recovery of a doré product. Further, the metallurgical results obtained were within the range expected, and show a path forward for optimization and further testing.

Community Relations and Social Responsibility - Crucero

The Company's approach to its business and social responsibilities involves implementing strategies beneficial to the community, the environment and to Peru. The Company's commitment to these strategies extends beyond standard compliance with national and international guidelines and involves building relationships based on honesty, openness and mutual trust.

On June 17, 2013, the community of Oruro voted to renew the Company's exploration agreement with the community for a 4-year term. The Company was recognized as having completed its obligations to the local community related to the past agreement which expired in May 2013, including road maintenance, road upgrades and veterinarian programs. The new agreement includes certain commitments by the Company for annual rental payments and infrastructure improvements in the community. The property at the Crucero Gold project is owned communally, and the renewal of this agreement gives the Company the legal rights to continue exploration on the Crucero Gold Project area.

In addition to a community agreement, the Company must secure access agreements from the individual families that have historically used certain locations for alpaca grazing. The Company has a number of family agreements in place to allow field work at Crucero and plans to continue to secure access agreements as necessary.

Surface rights on the Crucero Gold Project are held by the local community and in the event that the Company advances the Crucero Gold Project to a mining operation, these rights must be acquired from the relevant communities by purchase or lease.

The Company has a community relations office in the town of Crucero, which is located approximately 45 kilometres from the Crucero Gold Project. This office complements the Company's camp community relations office, from which various community relations, education, local infrastructure improvement project, and medical/dental/veterinarian programs that are developed, provided and paid for by the Company.

INVICTA GOLD PROJECT

The Company, through its acquisition of Andean American, now owns the Invicta Gold Project, which is located in the Province of Huaura in northwest Peru and has a NI 43-101 compliant resource estimate comprised of 967,000 equivalent ounces Au in the measured & indicated category and 236,000 equivalent ounces Au in the inferred category.

Please see the Company's AIF, re: "*Invicta Gold Project*" for: a history of the technical work conducted on the project; extracts from the SRK Technical Report; and the acquisition of the exploration ground.

A summarized extract from the SRK Technical Report, detailing the above-mentioned resource estimate, is shown below:

Mineral Resource Statement for the Invicta Gold-Silver-Copper-Lead-Zinc Deposit, Huaura Province, Peru, SRK Consulting (Inc.), April 6, 2012*

Zone	Resource Category	Tonnes (000's)	Metal						Contained Metal (000's)					
			AuEq (g/t)	Au (g/t)	Ag (g/t)	Cu (%)	Pb (%)	Zn (%)	AuEq Oz	Au Oz	Ag Oz	Cu Lbs	Pb Lbs	Zn Lbs
Total - All Zones	Measured	131	6.65	4.29	31.71	0.73	0.39	0.38	28	18	133	2,119	1,110	1,105
	Indicated	8,513	3.43	2.09	15.65	0.42	0.24	0.28	939	573	4,285	79,048	45,171	53,482
	M + I	8,644	3.48	2.13	15.90	0.43	0.24	0.29	967	591	4,418	81,167	46,281	54,587
	Inferred	2,534	2.90	1.61	12.02	0.46	0.27	0.18	236	131	979	25,879	14,891	9,854

*Notes:

- Mineral Resources are not Mineral Reserves and do not have demonstrated economic viability. There is no certainty that all or any part of the Mineral Resources estimate will be converted into a Mineral Reserves estimate;
- Resources stated as contained within potentially economically mineable underground solids stated above a 1.3g/t Au Equivalent cut-off;
- The resource is stated at a 1.30 g/t gold equivalent cut-off contained within potentially economically mineable mineralized solids. Metal prices assumed for the gold equivalent calculation are US\$1,500/oz for gold, US\$32.50/oz for silver, US\$3.90/lb for copper, US\$1.05/lb for lead and US\$1.00/lb for zinc. The gold equivalent calculation assumes 100% metallurgical recovery, and does not account for any smelting, transportation or refining charges.
- Mineral resource tonnage and contained metal have been rounded to reflect the accuracy of the estimate, and numbers may not add due to rounding;
- Mineral resource tonnage and grade are reported as diluted to reflect a potentially minable underground selective mining unit of 3.0m; and
- The resource model has not been depleted for historical artisanal mining as the location and extent of these workings are largely undocumented.

Community Relations and Social Responsibility- Invicta

Invicta continues to work diligently with the communities directly or indirectly affected by the Invicta Gold Project. These communities largely consist of farmers that cultivate mainly fruit crops along the valley roughly 2 km from the Invicta Gold Project. Four communities, namely Paran, Lacsanga, Santo Domingo de Apache and Sayan, will primarily benefit from the investment made if a mine is developed and operated at the Invicta Gold Project. Before mine construction can begin, the Company and each of the three communities need to sign Surface Land Use Agreements.

To date, the Company has signed a 20-year agreement with Santo Domingo de Apache and is working towards closing the remaining two agreements as soon as reasonably possible. In addition, the Company has signed several other related agreements to acquire secondary parcels of land for the purpose of infrastructure development to support the project. All agreements signed by the Company include long-term commitments to contribute to social development and to maintaining a close partnership with the surrounding communities.

The Company has and is supporting the following ongoing initiatives:

- Pine Tree Nursery (Santo Domingo de Apache community) - 50,000 pine tree seedlings (40 ha's) planted, leading to a projected production of 100,000 trees per year once the community expands this project to encompass 300 ha's, and create a sustainable commercial wood source;
- CHURCA – CORONA, SAN MIGUEL DE LUCMACOTO (Santo Domingo de Apache community) and EL AHORCADO (Sayan community) Irrigation Channels - improvement and construction of 24 kms of irrigation channel, as well as training on the implementation of new irrigation technologies. These projects are being funded by the Government of Peru, and are expected to be completed by early 2014; and
- PICUNCHE – MIRAFLORES Road Upgrade (Lacsanga community) – improvement and construction of 17.9 km of road and related works, as well as maintenance training. This project will be funded by the Government of Peru, and is expected to be completed within 1 year, once contractor selection and final project approval is obtained by the community.

INVESTMENT IN SOUTHERN LEGACY MINERALS INC.

The Company, through its acquisition of Andean American, owns 9,841,269 shares or approximately 17% of the voting shares of Southern Legacy, which trades on the TSX-V and BVL (symbol: LCY).

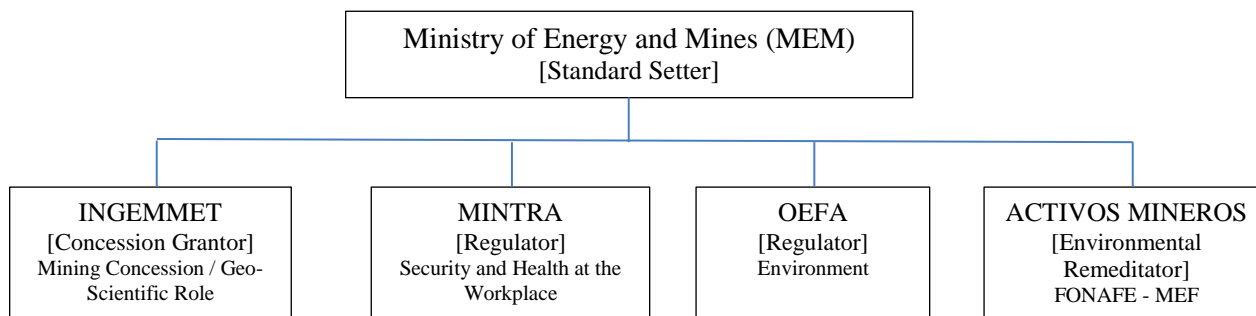
Southern Legacy's principal asset is its flagship AntaKori copper and gold project located in the Yanacocha-Hualgayoc mining district in the department of Cajamarca in northern Peru, between Gold Fields Limited's Cerro Corona and Buenaventura's and Southern Copper's Tantahuatay project.

The Company continues to evaluate its strategic options regarding this portfolio investment.

Strategies and key drivers

Government authorities

In Peru, there is a number of mining sector authorities, as set out below:



Permitting

Three permits are required for the conduct of exploration or mining within a concession: Environmental, Community and Water. The Environmental and Water permits are renewable according to the term specified in the permits, which may be annual or bi-annual. The Community permit is an agreement between the holder of the mining concession and the local communities.

Additionally, the Company obtains an agreement and permission from the families occupying the concession areas before any exploration work is conducted, for which the Company pays a modest annual rental fee.

Environmental compliance and reclamation

The Company is committed to ensuring that it is compliant with all material aspects of the environmental regulatory environment in Peru.

The Company is not presently subject to any significant monetary environmental liabilities although there are environmental responsibilities as prescribed in the environmental permits and community/family agreements for the Crucero and Invicta Gold Projects, such as reclamation of access road, drilling platform and camp locations, and other waste rock or soil disturbances. On an ongoing basis, the Company accrues and records estimated costs for such remediation (see “*Critical Accounting Estimates*”).

Concession grants

Mining activities in Peru are subject to the provisions of the Uniform Text of Mining Law, approved by the Supreme Decree N°. 014-92-EM of June 2, 1992 (hereinafter the "Mining Law"), as well as its Regulations which have been subsequently approved by Supreme Decree and/or are in effect.

Under Peruvian law, and as a general rule, any investor may carry out mining activities throughout the country. Discrimination based, inter alia, on the nationality or legal structure of the concerned investor, is precluded. However, before an applicant can carry out exploration activities, they must file a petition for a mining concession to be granted by the Mining and Metallurgic Geology Institute of Peru ("INGEMMET") to carry out any mining activities different than: reconnaissance; prospecting; and commercialization of mining products or minerals of any type and condition.

Following a review of the petition, a determination that there are no conflicts or contested rights, and favorable technical and legal opinions are given, the INGEMMET shall grant the title deed to the concession.

A concession grants to its titleholder real rights consisting of all the attributes acknowledged by the Mining Law to the concessionaires. It allows its holder to carry out exploration and exploitation activities. Exercise of the rights derived from a mineral concession, including the right to explore, develop and further exploit on an exclusive basis only the designated minerals within the internal boundaries of the mineral concession, is subject to the awarding of the required permits, authorizations and approvals, including relevant surface rights.

Concessions are irrevocable, provided the titleholder complies with the obligations imposed by the Mining Law to retain their validity.

Titleholders must respect archaeological or historical monuments, the national road system, oil pipelines, military buildings, ports or any other construction or infrastructure built for national defense or technical or scientific purposes, located within the boundaries of a mineral right.

The petition application for a mining concession involves the following:

- an Official Form for a mining pediment has to be filled-in with information regarding the requested area and the petitioner, and filed with INGEMMET;
- the petitioner has to pay an administrative fee equivalent to 10% of a Peruvian Tax Unit and the validity fee (“License Fee”) corresponding to the year in which the petition application is filed; and
- an affidavit must be filed regarding the petitioner’s social responsibility commitment with the communities located in the areas surrounding the area contained in the petition application.

After the petition application is filed, it will be evaluated by the technical and legal areas of INGEMMET (which, in practice, usually takes approximately 4 weeks). If the evaluations are favourable, the petitioner will receive standard form documents (regarding the petition’s existence and the area covered by it) from INGEMMET that must be published in the official gazette and in a newspaper within the area in which the concession is located.

The petitioner has 30 business days to make these publications and then 60 days to provide INGEMMET evidence that such publications have been completed. Within the next 30 business days, INGEMMET will issue additional technical and legal reports. If these reports confirm the technical and legal viability of the concession, the concession title should be granted.

The title does not allow the concession-holder itself to carry out mining exploration or exploitation. Consequently, the concession-holder shall obtain:

- the approval of the National Institute of Culture of declarations, authorizations or certificates that are required for the exercise of mining activities.
- approval of an environmental certification issued by the competent environmental authority (such as the OEFA), subject to the rules of citizen participation.
- authorization for the use of land by an agreement with the owner of the land surface or the culmination of the procedure for administrative easement, which is not a common procedure nor is it granted lightly.
- any other permissions, licenses and authorizations that are required by all applicable legislation (such as from MINTRA), according to the nature and location of the activities that will be developed.

The Company’s experience is that the process for the granting of a mining concession title can take up to 28 months. However, this period could be longer if technical or legal objections are raised during the process (e.g., overlapping with other mining rights or within protected areas, etc.). Once the concession title is granted, its holder must wait for approximately another month to obtain an official document stating that no objections were filed against such concession title. Once this document is obtained, the concession-holder can apply for its recording in the Peruvian Public Registry (which will provide full enforceability to the concession). For this, the concession-holder shall present a certified copy of the Mining Concession Title and copy of the Certificate of Consent to the Peruvian Public Registry. This recording takes approximately 5-10 days to be completed.

Notwithstanding the above, pursuant to the provisions of Article 71 of the Peruvian Constitution, foreigners are restrained from holding, directly or indirectly, property rights in areas located within 50 kilometres from any of the country’s boundaries, except in case of public need expressly declared by a Supreme Decree approved by the Government’s Counsel according to the pertinent laws.

The Mining Law sets forth obligations that the concession title-holder must comply with in order to maintain their concessions in force, such as the concession-holder must:

- (a) engage in the economic exploitation of the correspondent concession, and attain a minimum level of mineral production before the end of the tenth year following the year in which the mining concession title is issued. If production is not attained by the tenth year, annual penalties are assessed and payable until the year when

the minimum level of production is attained. Should production not be attained by the fifteenth year, the concession-holder can apply for a further extension of up to an additional five years which may or may not be granted, depending upon the justification(s) given for the extension; and

- (b) pay the annual License Fee based on a specific rate in effect at the time, per each hectare held.

The Mining Law also provides for the lapsing of the applicable concession in case the concession-holder does not comply with its obligations of making payments as noted above. That is, a mineral pediment or concession will be forfeited in the event that the License Fees or the penalties, when applicable, are not paid when due. Concessions for processing and mineral transportation will also be forfeited in the event the License Fees, when applicable, are not paid when due.

The concession area size generally granted ranges from a minimum of 100 to a maximum of 1,000 hectares, but may extend to a maximum of 10,000 hectares when the concessions are located in the sea.

A concession-holder may hold two or more concessions, whether or not of the same type and nature, provided that it complies with the relevant legal requirements.

Concessions may be transferred, conveyed and subjected to mortgage, while any movable assets engaged to mining activities as well as minerals extracted and/or processed from such concessions that belong to the concession-holders may be subject to pledge. Any and all of these transactions and contracts must be formally put into a public deed and registered before the Public Registry for them to be enforceable against the State and third parties.

Concession-holders are required to perform their mining activities in accordance with the systems, methods and techniques that lead to an improvement in the development of such activities, and in compliance with the health and safety and environmental regulations applicable to the mining industry in Peru. They must take all necessary steps to avoid damages against third parties, and are required to permit the entrance to the area of their concessions, at any time, of the mining authorities in charge of controlling the concession-holder's obligations.

In May 2011, changes in the Peruvian legal framework were made which require consultation with indigenous or native peoples prior to the grant or issuance of titles or rights to investors that may conflict or affect indigenous or native peoples' interests. These changes did not affect any of the original six mining concession titles comprising the Crucero Gold Project, as they were applied for and granted prior to the effective date of these legal provisions.

For the Company, these new regulations, as well as the mandatory consultation process, were only applicable to the Pacacorral 2, Pacacorral 3 and Pacacorral 4 petition applications which were in the petition stage of the concession-granting process at the time of the implementation of these new regulations. In November 2012 and June 2013, the Company received formal notification that the Pacacorral 4, and the Pacacorral 2 & 3 petition applications were officially changed to concession title status, respectively – see the table below.

In July 2011, the Government also announced that it would not be granting any new concessions within the Puno Region until July 2014. While the Crucero Gold Project is located within the Puno Region, this action is not expected to affect the Company's development plans for the Crucero Gold Project as the concessions comprising the project area were granted or were in the petition stage of the concession-granting process prior to the effective date of the announced freeze.

A listing of the Company's Crucero Gold Project concessions is as follows:

Concession Name	Identification Code	Area (Ha's)	Petition Filing Date	Concession Grant Date	Legal Status	Maximum Deadline ⁽¹⁾⁽²⁾⁽³⁾⁽⁴⁾
Mina Crucero 4	010170899	150	18-Oct-99	21-Feb-00	Concession	Year 2028
Mina Crucero 10	010065903	300	3-March-03	25-Sep-03	Concession	Year 2028
Crucero 1	010317507	650	31-May-07	10-Oct-07	Concession	Year 2028
Mina Crucero 2007	010317807	781	1-June-07	12-May-08	Concession	Year 2028
Santa Cruz 1	050024208	800	4-July-08	16-Aug-10	Concession	Year 2030
Pacacorral 1	710009309	700	7-Dec-09	3-Nov-10	Concession	Year 2030
Pacacorral 2	710013810	700	21-Sep-10	21-Jun-13	Concession	Year 2033
Pacacorral 3	710013710	600	21-Sep-10	21-Jun-13	Concession	Year 2033
Pacacorral 4	010367211	900	20-Jun-11	19-Sept-12	Concession	Year 2032

(1) Assumes the concession-holder complies with regulatory and statutory requirements, and provides sufficient justifications (which are accepted) to maximize the deadline date if required.

(2) Effective October 11, 2008, amendments were made to the determination of the maximum deadline, whereby the initial ten year period begins from the year following the issuance of mining concession title.

(3) For concessions where the mining concession title grant date was prior to October 11, 2008, the year 2018 was declared as the universal end of the ten year period for production to begin.

(4) If production is not attained by the tenth year, annual penalties are assessed and payable until the year when the minimum level of production is attained. Should production not be attained by the fifteenth year, the concession-holder can apply for a further extension of up to an additional five years which may or may not be granted, depending upon the justification(s) given for the extension.

The Company is, to its knowledge, in full compliance with all of its Crucero Gold Project concession-holder requirements, and the above-referenced concessions are in good standing.

Following is a continuity listing of the Company's exploration expenditures for the Crucero Project to June 30, 2013:

	Six months ended June 30, 2013 (\$000's)	Total from inception to June 30, 2013 (\$000's)
Camp, community relations and related costs	1,056	3,460
Project administration	966	2,975
Technical reports, assays and related costs	178	1,116
Drilling	-	2,595
Transportation, reclamation and professional fees	78	1,028
	2,287	11,175

The carrying value of Crucero as at June 30, 2013 is \$16,579,000 (\$17,114,000 – December 31, 2012). The change in carrying value of \$535,000 for the six-months ended June 30, 2013 is due to changes in foreign currency translation rates between the Canadian Dollar and Peruvian Nuevo Sol which occurred from December 31, 2012 to June 30, 2013.

A listing of the Company's Invicta Gold Project concessions is as follows:

	Concession Name	Area (Ha.s)	Identification Code	Status	Grant Date	Maximum Concession Expiry Date ⁽¹⁾⁽²⁾⁽³⁾⁽⁴⁾
1	INVICTA I	1,000	10312905	Concession	14-Oct-05	14-Oct-28
2	INVICTA II	1,000	10313005	Concession	10-Oct-05	10-Oct-28
3	INVICTA III	1,000	10313105	Concession	14-Oct-05	14-Oct-28
4	INVICTA IV	1,000	10313205	Concession	14-Oct-05	14-Oct-28
5	INVICTA V	900	10313305	Concession	10-Oct-05	10-Oct-28
6	INVICTA VI	600	10306609	Concession	8-Jan-10	8-Jan-30
7	INVICTA VII	300	10313705	Concession	17-Oct-05	17-Oct-28
8	INVICTA VIII	800	10336305	Concession	15-Oct-05	15-Oct-28
9	INVICTA IX	800	10336405	Concession	16-Nov-05	16-Nov-28
10	INVICTA X	900	10336505	Concession	3-Nov-05	3-Nov-28
11	INVICTA XI	1,000	10336605	Concession	16-Nov-05	16-Nov-28
12	INVICTA XII	600	10336705	Concession	16-Nov-05	16-Nov-28
13	INVICTA XV	1,000	10169606	Concession	27-Apr-06	27-Apr-28
14	INVICTA XVI	300	10169706	Concession	2-May-06	2-May-28
15	INVICTA XVII	1,000	10596907	Concession	10-Dec-07	10-Dec-28
16	INVICTA XVIII	1,000	10597007	Concession	12-May-08	12-May-28
17	INVICTA XIX	1,000	10598907	Concession	18-Feb-08	18-Feb-28
18	INVICTA XX	1,000	10599007	Concession	11-Dec-07	11-Dec-28
19	INVICTA XXI	500	10601907	Concession	10-Dec-07	10-Dec-28
20	INVICA XXII	800	10602007	Concession	11-Dec-07	11-Dec-28
21	INVICTA XXIII	1,000	10622307	Concession	30-Sep-10	30-Sep-30
22	INVICTA XXV	1,000	10622507	Concession	30-Sep-10	30-Sep-30
23	INVICTA XXVI	900	10103709	Concession	20-May-09	20-May-29
24	INVICTA XXX	800	10103809	Concession	20-May-09	20-May-29
25	INVICTA XXXI	500	10103909	Concession	29-Apr-09	29-Apr-29
26	INVICTA XXXII	1000	10104009	Concession	19-May-09	19-May-29
27	INVICTA XXXIII	1000	10104109	Concession	29-Apr-09	29-Apr-29
28	INVICTA XXXIV	800	10104209	Concession	29-Apr-09	29-Apr-29
29	INVICTA XXXV	1,000	10104309	Concession	22-Jan-10	22-Jan-30
30	INVICTA XXXVI	617	10209010	Concession	26-Jul-10	26-Jul-30
31	INVICTA XXXVII	800	10208910	Concession	20-Jul-10	20-Jul-30
32	INVICTA XXXVIII	1000	10476110	Concession	7-Jan-11	7-Jan-31
33	INVICTA XXXIX	900	10476210	Concession	10-Dec-10	10-Dec-30
34	INVICTA XL	1000	10573411	Concession	10-Dec-10	10-Dec-30
35	INVICTA XLII	800	10573511	Concession	10-Dec-10	10-Dec-30
36	INVICTA XLIII	600	10573611	Concession	10-Dec-10	10-Dec-30
37	INVICTA XLV	800	10573811	Concession	10-Dec-10	10-Dec-30
38	INVICTA XLVI	1000	10281912	Concession	10-Dec-10	10-Dec-30
39	INVICTA XLVII	1000	10282012	Concession	10-Dec-10	10-Dec-30
40	INVICTA XLVIII	500	10282012	Petition	16-Jul-12	16-Jul-32
41	INVICTA XLIX	300	10281812	Concession	10-Dec-10	10-Dec-30
42	VICTORIA UNO (5)	1,000	10334195	Concession	23-May-96	23-May-28
43	VICTORIA DOS (5)	400	10336295	Concession	21-Jun-96	21-Jun-28
44	VICTORIA TRES (5)	900	10335795	Concession	14-Jun-96	14-Jun-28
45	VICTORIA CUATRO (5)	400	10197196	Concession	20-Sep-96	20-Sep-28
46	VICTORIA SIETE (5)	1,000	10231196	Concession	11-Oct-96	11-Oct-28

(1) Assumes the concession-holder complies with regulatory and statutory requirements, and provides sufficient justifications (which are accepted) to maximize the deadline date if required.

(2) Effective October 11, 2008, amendments were made to the determination of the maximum deadline, whereby the initial ten year period begins from the year following the issuance of mining concession title.

(3) For concessions where the mining concession title grant date was prior to October 11, 2008, the year 2018 was declared as the universal end of the ten year period for production to begin.

(4) If production is not attained by the tenth year, annual penalties are assessed and payable until the year when the minimum level of production is attained. Should production not be attained by the fifteenth year, the concession-holder can apply for a further extension of up to an additional five years which may or may not be granted, depending upon the justification(s) given for the extension.

(5) Comprise part of the Invicta Gold Project resource footprint – these concessions are also subject to the Barrick Royalty Agreement.

The Company is, to its knowledge, in full compliance with all of its Invicta concession-holder requirements, and the above-referenced concessions are in good standing, except that as at June 30, 2013 only the annual concession fees for the Victoria concessions (within which the Invicta deposit is located) have been paid. The Company is in the process of determining which of the other Invicta concessions will be kept going forward. The unpaid concession fees total US\$165,000 and must be paid by June 30, 2014 in order for the Company to avoid penalty charges and /or losing the related concessions.

Following is a continuity listing of the Company's exploration expenditures for Invicta during the six months ended June 30, 2013:

	Six months ended June 30, 2013	Total from acquisition to June 30, 2013
	(\$000's)	(\$000's)
Project administration	696	915
Camp, community relations and related costs	374	590
Technical reports and assays	44	6
Transportation, reclamation and professional fees	-	117
	<u>1,114</u>	<u>1,659</u>

The carrying value of the Invicta mineral property as at June 30, 2013 is \$10,514,000 (\$10,853,000 – December 31, 2012). The change in carrying value of \$339,000 for the six-months ended June 30, 2013 is due to changes in foreign currency translation rates that occurred between the Canadian Dollar and Peruvian Nuevo Sol from December 31, 2012 to June 30, 2013.

Selected Quarterly Information

The following table presents selected unaudited quarterly operating results for each of the last eight quarters. Selected quarterly financial information is reported in accordance with IFRS.

Financial Data for Last Eight Quarters (Unaudited)								
<i>In thousands of Canadian Dollars, except for per share amounts</i>								
Three-months ended	Jun-13	Mar-13	Dec-12	Sep-12	Jun-12	Mar-12	Dec-11	Sep-11
Total revenues	\$0	\$0	\$0	\$0	\$0	\$0	\$0	\$0
Exploration expenses	\$1,734	\$1,658	\$2,193	\$1,624	\$989	\$669	\$1,263	\$712
General and administrative expenses	\$770	\$873	\$963	\$388	\$557	\$764	\$641	\$337
Accretion expense	\$0	\$0	\$0	\$0	\$0	\$22	\$109	\$123
Interest (income)	\$(19)	\$(27)	\$(34)	\$(4)	\$(8)	\$(12)	\$(40)	\$(43)
Impairment loss on available-for-sale financial asset	\$344	\$985	\$1,476	\$0	\$0	\$0	\$0	\$0
Foreign exchange loss (gain)	\$(56)	\$(9)	\$(20)	\$7	\$(2)	\$23	\$(31)	\$36
Loss	\$2,773	\$3,480	\$4,578	\$2,015	\$1,537	\$1,466	\$1,942	\$1,165
Basic and diluted loss per share	\$0.03	\$0.04	\$0.06	\$0.05	\$0.03	\$0.03	\$0.04	\$0.02

As the Company has not had any revenue-producing mineral properties to date, no mining revenues are reflected in the above table.

Factors that have caused fluctuations in the Company's quarterly results include: the impairment losses on the Company's investment in Southern Legacy, timing of the Company's exploration activities, the scope of the Company's investor relations programs, share-based compensation, accretion expense on the Company's

outstanding payment obligations to the MP Vendors, and foreign exchange gains or losses related to US Dollar-denominated monetary assets and liabilities when the Canadian Dollar exchange rate fluctuates.

In periods of loss, basic and diluted loss per share is the same because the effect of potential issues of shares would be anti-dilutive.

The Company operates in one segment, being mineral exploration and development. The Company's mineral properties are in Peru, South America. The consolidated statements of loss, comprehensive loss and deficit for the periods presented reflect both the Company's Canadian and Peruvian operations. All of the Company's operating costs in Peru are expensed, in accordance with the Company's accounting policy.

Financial results for the three and six months ended June 30, 2013 and 2012 are summarized as follows:

	Three months ended June 30,		Six months ended June 30,	
	2013	2012	2013	2012
	(\$000's)	(\$000's)	(\$000's)	(\$000's)
Operating expenses				
Exploration	1,734	989	3,392	1,658
General and administration	770	557	1,643	1,321
Operating loss	2,504	1,546	5,035	2,979
Impairment loss on available-for-sale financial asset	344	–	1,329	–
Finance expense – accretion	–	–	–	22
Finance income – interest	(19)	(8)	(46)	(19)
Foreign exchange loss (gain)	(56)	(1)	(65)	21
Loss for the period	2,773	1,537	6,253	3,003
Loss per share - Basic and diluted	\$0.03	\$0.03	\$0.07	\$0.07

Overall, the losses for the three and six months ended June 30, 2013 were larger than those for the comparative periods in 2012, reflecting: the 2013 impairment losses on the Company's investment in Southern Legacy; increased field staffing and levels of community relations activity at Crucero for 2013; the additional exploration expenses related to Invicta acquired in October 2012, and for which there were no such expenses in 2012; and the cost of investor relations programs implemented in the second quarter of 2013.

Three months ended June 30, 2013

Compared to the comparable 2012 period, notable expense variances (excluding share-based compensation expenses, which are more fully described below) were as follows:

Exploration expenses

All such expenses relate to the Peru operations of the Company and totalled \$1,734,000 for 2013 as compared to \$989,000 for 2012, a net increase of \$745,000 for the period which reflects the following:

- Project administration – these expenses totalled \$871,000 for 2013 compared to \$340,000 for 2012, with the increase of \$531,000 being a result of:
 - Invicta-related expenses of \$383,000 for 2013 (\$Nil – 2012);
 - Costs related to the restructuring of MP's Lima office personnel and the hiring of the new MP President as of February 1, 2013, totalling approximately \$96,000;
 - Reduced share-based compensation expenses to \$23,000 for 2013 vs. \$83,000 for 2012, for a net decrease of \$60,000;
 - Travel costs associated with analyst and due diligence visits of \$22,000; and
 - Individually insignificant miscellaneous costs totalling approximately \$90,000.

- Camp, community relations and related costs – these expenses totalled \$786,000 for 2013 compared to \$459,000 for 2012, with the increase of \$327,000 being a result of :
 - Invicta-related expenses of \$225,000 for 2013 (\$Nil – 2012);
 - An increase in community relations contractor and project costs of \$205,000 for 2013;
 - Costs related to a 2013 restructuring of MP’s Crucero personnel, totalling approximately \$63,000;
 - Cost reductions of \$65,000 for 2013 as there was no Crucero drilling activity to June 30, 2013, unlike in 2012; and
 - Individually-insignificant miscellaneous costs associated with reduced camp activities for 2013 resulting in cost reductions totalling approximately \$101,000, net of \$3,000 (\$Nil – 2012) of share-based compensation expense.
- Technical reports, assays, transportation, reclamation, consulting and professional fees – these expenses totalled \$77,000 for 2013 compared to \$190,000 for 2012, with the decrease of \$113,000 being attributable to reduced activity in these areas as a normal matter of course, and there having been no drilling activity in 2013.

General and administration expenses

All such expenses relate to the Canadian operations of Lupaka Gold and totalled \$770,000 for 2013 compared to \$557,000 for 2012, with the increase of \$213,000 being a result of:

- Shareholder and investor relations – these expenses totalled \$454,000 for 2013 compared to \$174,000 for 2012, an increase of \$280,000, which reflects the costs of investor relations programs implemented in the second quarter which focused on the establishment of a European investor presence in the Company’s shareholder base, and a net increase of \$43,000 in share-based compensation expense;
- Salaries and benefits, professional and regulatory fees, office and general, and travel – these expenses totalled \$316,000 for 2013 compared to \$318,000 for 2012, for a net decrease of \$2,000 (which includes \$51,000 of share-based compensation expenses for 2013 vs. \$81,000 for 2012, which was offset by increased regulatory and TSX fees, and new BVL listing fees); and
- Corporate development – these expenses totalled \$Nil for 2013 compared to \$65,000 for 2012, a decrease of \$65,000. The 2012 expenses were as a result of the Andean American due diligence costs. There were no such corporate due diligence costs for 2013.

Six months ended June 30, 2013

Compared to the 2012 period, notable expense variances were as follows:

Exploration expenses

All such expenses relate to the Peru operations of the Company and totalled \$3,392,000 for 2013 compared to \$1,658,000 for 2012, a net increase of \$1,734,000 for the period as a result of the following:

- Project administration – these expenses totalled \$1,662,000 for 2013 compared to \$661,000 for 2012, with the net increase of \$1,001,000 being a result of:
 - Invicta-related expenses of \$697,000 for 2013 (\$Nil – 2012);
 - Costs related to restructuring of MP’s Lima office personnel and the hiring of the new MP President as of February 1, 2013, totalling approximately \$202,000;
 - Reduced share-compensation expenses to \$61,000 for 2013 (\$170,000 – 2012), for a net decrease of \$109,000; and
 - Individually insignificant miscellaneous costs totalling approximately \$211,000.
- Camp, community relations and related costs – these expenses totalled \$1,430,000 for 2013 compared to \$680,000 for 2012, the net increase of \$750,000 being a result of :
 - Invicta-related expenses of \$374,000 for 2013 (\$Nil – 2012);
 - An increase in community relations contractor and project costs of \$332,000 for 2013;
 - Costs related to a 2013 restructuring of MP’s Crucero personnel, totalling approximately \$119,000;
 - Comparable cost reductions of \$(65,000) for 2013 as there was no Crucero drilling activity to June 30, 2013, unlike 2012; and
 - A net decrease in individually-insignificant miscellaneous costs associated with reduced camp activities for 2013, totalling approximately \$10,000, which includes \$7,000 (\$Nil – 2012) of share-based compensation expense.

- Technical reports, assays and related costs – these expenses totalled \$222,000 for 2013 compared to \$99,000 for 2012, with the increase of \$123,000 being the result of:
 - Additional regional structural geology interpretation study (SRK) and metallurgical study (Ausenco) costs totalling approximately \$117,000 for 2013; and
 - Invicta-related expenses of \$6,000 for 2013 (\$Nil – 2012).
- Transportation, reclamation, consulting and professional fees – these expenses totalled \$78,000 for 2013 compared to \$218,000 for 2012, with the decrease of \$140,000 being primarily attributable to reduced transportation and professional fees as there has been no drilling activity in 2013.

General and administration expenses

All such expenses relate to the Canadian operations of Lupaka Gold and totalled \$1,643,000 for 2013 compared to \$1,321,000 for 2012, producing a net increase of \$322,000 as a result of the following:

- Shareholder and investor relations – these expenses totalled \$624,000 for 2013 compared to \$349,000 for 2012, reflecting the costs of investor relations programs implemented in the second quarter, as previously noted above, and increased share-based compensation expenses of \$29,000 (\$96,000 – 2013; \$67,000 – 2012);
- Salaries and benefits, professional and regulatory fees, office and general, and travel – these expenses totalled \$1,019,000 for 2013 compared to \$908,000 for 2012, an increase of \$111,000 primarily due to increased audit, regulatory and listing costs; and
- Corporate development – these expenses totalled \$Nil for 2013 compared to \$64,000 for 2012, a decrease of \$64,000. The 2012 expenses were as a result of the Andean American due diligence costs. There were no such corporate due diligence costs for 2013.

Share-based compensation expenses

In accordance with the Company's accounting policy for share-based compensation, included in exploration, and general and administration expenses for the three and six months ended June 30, 2013 and 2012 were non-cash share-based compensation expenses (a non-cash expense reflecting the estimated value of share option benefits to option-holders for the period), in the expense categories noted below:

	Three months ended June 30		Six months ended June 30	
	2013 (\$000's)	2012 (\$000's)	2013 (\$000's)	2012 (\$000's)
Salaries and benefits	51	81	160	197
Project administration	23	83	61	170
Shareholder and investor relations	70	27	96	67
Camp, community relations and related	3	–	7	–
Consulting and professional fees	2	3	5	8
Total share-based compensation	149	194	329	442

Impairment loss on available-for-sale financial asset

As a result of the Andean American acquisition, the Company owns 9,841,269 common shares in Southern Legacy, representing approximately 17% of the issued and outstanding ownership shares of Southern Legacy, and which the Company classifies as an available-for-sale financial asset.

As at June 30, 2013, the aggregate fair market value of this investment was \$1,181,000 (\$2,510,000 - December 31, 2012), as quoted by the TSX Venture Exchange, for which the Company recorded a total impairment loss of \$1,329,000 for the six months ended June 30, 2013 (\$344,000 - three months ended June 30, 2013; \$985,000 – three months ended March 31, 2013) in other operating expenses. Southern Legacy's common shares also trade on the BVL.

Liquidity and Capital Resources

(in thousands)	June 30, 2013 (\$000's)	December 31, 2012 (\$000's)
Cash and cash equivalents	6,376	10,716
Working capital (defined as current assets less current liabilities)	5,315	9,737
Total assets	35,955	42,780
Current liabilities	1,555	1,563
Shareholders' equity	34,400	41,217

The principal changes in the Company's cash during the six months ended June 30, 2013 were as follows:

- Cash used in operating activities in the six months ended June 30, 2013 was \$4,246,000 (\$2,606,000 - 2012), principally to fund the Company's loss for the period of \$6,253,000 (\$3,003,000 - 2012) offset by non-cash charges including the impairment loss on the investment in Southern Legacy of \$1,329,000 (\$Nil - 2012), share-based compensation of \$329,000 (\$442,000 - 2012), other miscellaneous non-cash expenses of \$597,000 (\$77,000 - 2012), as well as net changes in non-cash working capital of \$81,000 (\$122,000 - 2012).
- Net cash used in investing activities in the six months ended June 30, 2013 totalled \$75,000 for purchases of equipment, as compared to \$3,256,000 for the six months ended June 30, 2012 (primarily due to the \$3,057,000 (US \$3 million) final payment for the purchase of Lupaka Gold's initial 60% interest in MP).
- The Company had no cash flows from or used in financing activities in the six months ended June 30, 2013. Net cash used in financing activities during the six months ended June 30, 2012 totalled \$4,026,000, resulting from the payment of \$4,076,000 (US \$4 million) for the remaining 40% of MP that Lupaka Gold did not already own at the time, and \$50,000 from the exercise of stock options.

Total current liabilities as at June 30, 2013 were \$1,555,000 (\$1,563,000 - December 31, 2012), comprised of \$1,052,000 (\$1,019,000 - December 31, 2012) of accounts payable and accrued liabilities, mostly for current community obligations, and \$503,000 of provisions for reclamation (\$544,000 - December 31, 2012).

At present, the Company's operations do not generate positive cash flows and its financial success is dependent on management's ability to discover economically viable mineral deposits. The mineral exploration process can take many periods and is subject to factors that are beyond the Company's control.

In order to finance the Company's exploration programs and to cover administrative and overhead expenses, the Company raises money through equity financings. Many factors influence the Company's ability to raise funds, including the health of the resource market, the climate for mineral exploration investment, the Company's track record, and the experience and calibre of its management. Actual funding requirements may vary from those planned due to a number of factors, including the progress of exploration activities. Management believes it will be able to raise equity capital as required in the long term, but recognizes there will be risks involved that may be beyond its control.

Management believes that cash and cash equivalents on hand as at August 8, 2013 will be sufficient to fund the Company's planned head office and Peru exploration activities into the second half of 2014, as a result of the implementation of planned cost reductions in the areas of administration, and exploration drilling and technical studies.

On an ongoing basis, the Company examines various financing alternatives to address future funding requirements. Additionally, the Company is evaluating its potential opportunities to monetize certain of its non-core assets, such as the Invicta Gold Project and Southern Legacy shareholdings. There is no guarantee of the sufficiency or success of these initiatives.

As at June 30, 2013, the Company's aggregate common share capital was \$56,380,000 (\$55,782,000 - December 31, 2012) representing 84,972,896 issued and outstanding common shares without par value (81,751,769 - December 31, 2012), 6,696,375 share options outstanding (6,348,475 - December 31, 2012) with a fair value of \$2,436,000 (\$2,436,000 - December 31, 2012) and 7,279,167 share purchase warrants outstanding (8,079,167 - December 31, 2012) with a fair value of \$802,000 (\$802,000 - December 31, 2012).

Outstanding Share Data

As at August 8, 2013, the following securities were issued and outstanding:

- basic – 84,972,896 common shares
- fully-diluted – 101,948,438 common shares, after including:
 - 6,696,375 stock options, with exercise prices ranging from \$0.30 to \$4.08, of which 5,110,125 options are vested; and
 - 7,279,167 share purchase warrants, with a weighted average exercise price of \$2.22.

Accumulated Deficit

The Company's accumulated deficit was \$25,792,000 as at June 30, 2013 (\$19,539,000 - December 31, 2012), with the increase in deficit of \$6,253,000 reflecting the loss incurred for the six months ended June 30, 2013.

Dividends

There are no restrictions that could prevent the Company from paying dividends on its common shares. The Company has not paid any dividends on its common shares and does not intend to pay any dividends in the foreseeable future. It is the Company's intention to use all available cash flows to finance further operations and exploration of its resource properties.

Off-Balance Sheet Arrangements

The Company does not have any off-balance sheet arrangements.

Transactions with Related Parties

Related party transactions for the Company for the three months ended June 30, 2013 and 2012 are as follows:

- The Company paid consulting fees of \$65,000 (\$60,625 – 2012) to Gordann Consultants Ltd.
- The Company paid consulting fees of \$80,000 (\$60,000 – 2012) to Havilah Holdings Ltd.
- The Company paid consulting fees of \$3,373 (\$3,780 – 2012) to a family member of Gordon Ellis.

As at June 30, 2013, there were no amounts payable to related parties.

Adoption of new and amended IFRS pronouncements

The unaudited condensed consolidated interim financial statements have been prepared on a basis consistent with the accounting policies expected to be applied for the year ending December 31, 2013 and follow the same accounting policies and methods of application as the 2012 annual consolidated financial statements, except that the company has adopted the following new or amended International Financial Reporting Standards ("IFRS") and International Accounting Standards ("IAS") standards effective January 1, 2013:

- IFRS 10, Consolidated financial statements,
- IFRS 11, Joint arrangements,
- IFRS 12, Disclosures of interests in other entities,
- IAS 1, Presentation of items of other comprehensive income, and
- IFRS 13, Fair Value Measurement and disclosure requirements

These new standards did not affect the Company's financial results.

Critical Accounting Estimates

Estimates and judgements are continually evaluated and are based on historical experience and other factors, including expectations of future events that are believed to be reasonable under the circumstances.

In preparing its financial statements, the Company is required to make judgements, estimates and assumptions that affect the reported amounts of assets, liabilities and contingent liabilities at the date of the consolidated financial statements and reported amounts of revenues and expenses during the reporting period. Actual results could differ from those estimates.

Estimates and judgements used in developing and applying the accounting policies are continually evaluated and are based on historical experience and other factors, including expectations of future events that may have a financial impact on the Company and that are believed to be reasonable under the circumstances. The estimates and underlying assumptions are reviewed on an ongoing basis.

The estimates and assumptions that have a significant risk of causing a material adjustment to the carrying amounts of assets and liabilities within the next financial year are discussed below:

Impairment of mineral properties – the carrying value of the Company’s mineral properties are reviewed by management at each reporting period, or whenever events or circumstances indicate that the carrying value may not be recovered. If impairment is determined to exist, a formal estimate of the recoverable amount is performed and an impairment loss is recognized to the extent that the carrying amount exceeds the recoverable amount. The recoverable amount of an asset is measured at fair value less costs to sell.

Reclamation obligations – provision is made for the anticipated costs of future reclamation and rehabilitation of mining areas which have been altered due to exploration activities and from which natural resources have been extracted to the extent that a legal or constructive obligation exists. These provisions include future cost estimates associated with reclamation, the calculation of which requires assumptions such as application of environmental legislation, available technologies and engineering cost estimates. A change in any of the assumptions used may have a material impact on the carrying value of reclamation provisions.

Accounting Policies

The Company's Audited Financial Statements have been prepared in accordance with and using accounting policies in full compliance with Part I of the Canadian Institute of Chartered Accountants Handbook standards. This is comprised of IFRS issued by the International Accounting Standards Board ("IASB") and Interpretations of the International Financial Reporting Interpretations Committee ("IFRIC").

Financial Instruments

Financial assets and liabilities are recognized when the entity becomes a party to the contractual provisions of the instrument. Upon initial recognition, financial assets and liabilities are measured at fair value plus or less transaction costs respectively, that are directly attributable to the acquisition or issue of the financial asset or financial liability, except for those financial assets and liabilities classified as fair value through profit or loss, for which the transaction costs are expensed in loss.

Financial assets and liabilities

The Company’s financial instruments consist of cash and cash equivalents, trade and other receivables, investment in Southern Legacy, trade and other payables, and amounts due to non-controlling shareholders and to related parties.

All financial assets and liabilities are recognized when the Company becomes a party to the contract creating the item. On initial recognition, financial instruments are measured at fair value, which includes transaction costs. Measurement in subsequent periods depends on whether the financial instrument has been classified as “fair-value-through-profit-and-loss”, “available-for-sale”, “held-to-maturity”, “loans and receivables”, or “other financial liabilities”. The classification depends on the nature and purpose of the financial instrument and is determined at the time of initial recognition. Financial liabilities are classified as either financial liabilities at “fair-value-through-profit and loss” or “other financial liabilities”. Financial liabilities are classified as “fair-value-

through-profit and loss” when the financial liability is either ‘held for trading’ or it is designated as “fair-value-through-profit and loss”.

Financial assets and financial liabilities classified as “fair-value-through-profit and loss” are measured at fair value with changes in those fair values recognized in loss for the year. Financial assets classified as “available-for-sale” are measured at fair value, with changes in those fair values recognized in other comprehensive loss. Financial assets classified as “held-to-maturity” and “loans and receivables” are measured at amortized cost. Unrealized currency translation gains and losses on available-for-sale securities are recognized in loss for the year. Financial liabilities classified as “other financial liabilities” are measured initially at fair value and subsequently measured at amortized cost.

Cash and cash equivalents are designated as “loans and receivables” and are measured at fair value. Trade and other receivables are designated as “loans and receivables”. The Company’s investment in Southern Legacy is classified as “available for sale”. Trade and other payables, including amounts due to related parties and non-controlling interest are designated as “other financial liabilities”. No financial assets or liabilities have been designated as at fair-value-through-profit-and-loss.

Impairment and non-collectability of financial assets

An assessment is made at each statement of financial position date to determine whether there is objective evidence that a financial asset or group of financial assets, other than those at fair-value-through-profit and loss, may be impaired. If such evidence exists, the estimated recoverable amount of the asset is determined and an impairment loss is recognized for the difference between the recoverable amount and the carrying amount as follows: the carrying amount of the asset is reduced to its discounted estimated recoverable amount, either directly or through the use of an allowance account and the resulting loss is recognized in profit or loss for the year. When an available-for-sale financial asset is considered to be impaired, cumulative gains or losses previously recognized in other comprehensive loss are reclassified to loss for the year.

With the exception of available-for-sale equity instruments, if, in a subsequent period, the amount of the impairment loss decreases, the previously recognized impairment loss is reversed through profit or loss for the year to the extent that the carrying amount of the asset at the date the impairment is reversed does not exceed what the amortized cost would have been had the impairment not been recognized. In respect of available-for-sale equity securities, impairment losses previously recognized in loss for the year are not reversed through loss for the year. Any increase in fair value subsequent to an impairment loss is recognized in other comprehensive income or loss for the year.

Financial risk factors

(a) Financial risk exposure and risk management

The Company’s activities expose it to a variety of financial risks, which include credit risk, liquidity risk, and market risk, including foreign exchange risk, interest rate risk, and commodity price risk.

Financial risk management is carried out by the Company's management team with oversight from the Board of Directors. The Board of Directors also provides regular guidance for overall risk management.

Credit risk

Credit risk is the risk of loss if counterparties do not fulfill their contractual obligations. Financial instruments that potentially subject the Company to credit risk consist of cash and cash equivalents and trade and other receivables.

The Company minimizes the credit risk of cash and cash equivalents by depositing only with Canadian chartered banks and banks of good credit standing. The Company’s trade and other receivables consist of HST receivable due from the Government of Canada and IGV from the Government of Peru.

Companies can apply for recovery of Impuesto General A Las Ventas (“IGV”) on certain exploration expenditures as they are incurred in Peru. IGV is a value-added tax charged at a rate of 18% on all goods and services. IGV expenditures are generally refundable if recovery is applied for after the related expenditures

are approved by the Peru Government's tax authority, SUNAT, and paid. Effective from August 2012, the Company has applied for such eligible recoveries.

The portion estimated by management to be refundable is included in trade and other receivables, and the amount not refundable to the Company is expensed as part of the related operating expense or would be capitalized to mining properties if the Company has established mineral reserves in accordance with the Company's related accounting policy. In addition, any amount not refunded to the Company can be used to offset amounts due to the Peruvian Revenue Service by the Company resulting from IGV charged to domestic customers on future sales as and when these occur. Moreover, if the Company recovers amounts that have been deferred, the amount received would be applied to reduce capitalized mining property costs or taken as a credit against current exploration expenses, depending on the prior accounting treatment made.

Liquidity risk

Liquidity risk is the risk that the Company will not be able to meet its financial obligations as they fall due. The Company manages its liquidity risk by actively forecasting, planning, reviewing and monitoring expenditures and commitments and anticipated financial requirements. At the present rate of spending and in the absence of the Company obtaining new financing, cash and cash equivalents on hand at June 30, 2013 are considered to be sufficient to fund the Company's ongoing operational needs for the next twelve months. By reducing or eliminating certain discretionary expenditures, management believes that this period can be extended to fifteen months or more.

Market risk

Market risk is the risk of loss that may arise from changes in market factors such as foreign exchange rates, prices, interest rates, and commodity prices.

Foreign exchange risk

The Company is exposed to the financial risk related to the fluctuation of foreign exchange rates. The Company has subsidiaries that operate in Peru and as such, a significant portion of its expenses are incurred in Peruvian Nuevo Soles and US Dollars. A significant change in the currency exchange rates could have an effect on the Company's results of operations. The Company has not hedged its exposure to currency fluctuations. Future project exploration and development expenditures are expected to be paid in US Dollars. As such, the Company is subject to risk due to fluctuations in the exchange rates for the US and Canadian Dollar. As at June 30, 2013, the Company' cash and cash equivalents were predominantly in Canadian Dollars.

Price risk

The Company has exposure to fluctuations in the market prices of its financial instruments, specifically the investment in Southern Legacy. Historical movements and volatilities in market variables may significantly increase or decrease the value of the Company's investment in Southern Legacy. Based on the Company's carrying value of its investment in Southern Legacy as at June 30, 2013, a 10% fluctuation in its market value would result in an increase or decrease of approximately \$118,000 in the Company's comprehensive loss.

Interest rate risk

The Company's exposure to interest rate risk arises from the interest rate impact on its cash and cash equivalents. There is minimal risk that the Company would recognize any significant loss as a result of a decrease in the fair value of any short-term investments as a result of fluctuations in interest rates included in cash and cash equivalents, due to their short term nature.

Commodity price risk

Commodity price risk could adversely affect the Company. In particular, the Company's future profitability and viability of development depends upon the world market price of gold. Gold has fluctuated widely in recent years. There is no assurance that, even as commercial quantities of gold may be produced in the future, a profitable market will exist for gold. A decline in the market price of gold may also require the Company to reduce its mining interests, which could have a material and adverse effect on the Company's value. As of June 30, 2013, the Company was not a gold producer. As a result, commodity price risk may affect the

completion of future equity transactions such as equity offerings and the exercise of stock options and warrants. This may also affect the Company's liquidity and its ability to meet its ongoing obligations.

(b) Fair value of financial instruments

IFRS 7 establishes a three-tier fair value hierarchy, which prioritizes the inputs used in measuring fair values as follows:

- Level 1 – valuation based on quoted prices (unadjusted) in active markets for identical assets or liabilities.
- Level 2 – valuation techniques based on inputs that are other than quoted prices included in Level 1 that are observable for the asset or liability, either directly (prices) or indirectly (derived from prices); and
- Level 3 – valuation techniques with unobservable market inputs (involves assumptions and estimates by management of how market participants would price the assets or liabilities)

In evaluating fair value information, considerable judgment is required to interpret the market data used to develop the estimates. The use of different market assumptions and valuation techniques may have a material effect on the estimated fair value amounts. Accordingly, the estimates of fair value presented herein may not be indicative of the amounts that could be realized in a current market exchange.

The fair values of cash and cash equivalents, trade and other receivables, trade and other payables and provision for reclamation approximate carrying value because of their short term nature. The Company's investment in Southern Legacy is classified as Level 1 of the fair value hierarchy.

Disclosure Controls and Internal Controls Over Financial Reporting

Management of the Company is responsible for the design and implementation of disclosure controls and procedures and for internal controls over financial reporting ("ICFR") as required by National Instrument 52-109 – Certification of Disclosure ("NI 52-109") in Issuers' Annual and Interim Filings.

The Company's disclosure controls and procedures are designed to provide reasonable assurance that all relevant information is communicated to senior management to allow timely decisions regarding the required disclosure.

While management believes that the Company's disclosure controls and procedures provide a reasonable level of assurance that they are effective, they do not expect that the Company's disclosure controls and procedures or internal control over financial reporting will prevent all errors and fraud. A control system, no matter how well conceived or operated, can provide only reasonable, not absolute, assurance that the objectives of the control system are met.

Management is responsible for establishing and maintaining adequate internal control over the Company's financial reporting. The Company's internal control system was designed to provide reasonable assurance that all transactions are accurately recorded, that transactions are recorded as necessary to permit preparation of financial statements in accordance with IFRS, that the Company's assets are safeguarded, and that expenditures are made in accordance with appropriate authorization.

Internal control systems, no matter how well designed, have inherent limitations. Therefore, even those systems determined to be effective can provide only reasonable assurance with respect to financial statement preparation and presentation. Also, projections of any evaluation of effectiveness to future periods are subject to the risk that controls may become inadequate because of changes in conditions, or that the degree of compliance with policies or procedure may deteriorate.

Changes in Internal Controls Over Financial Reporting

During the three months ended June 30, 2013, there was no change in the Company's internal control over financial reporting that materially affected, or is reasonably likely to materially affect, the Company's internal controls over financial reporting.

Risk Factors – the Company's Risk Factors are fully set out in its AIF, which is available at www.sedar.com. As of the date of this MD&A, management is not aware of any significant change(s) in the nature or status of the Risk Factors contained in the Company's AIF.